



# Thematic working sessions on selected RBSP topics

## Thematic working session 'Data Availability'

EU data collection exercise



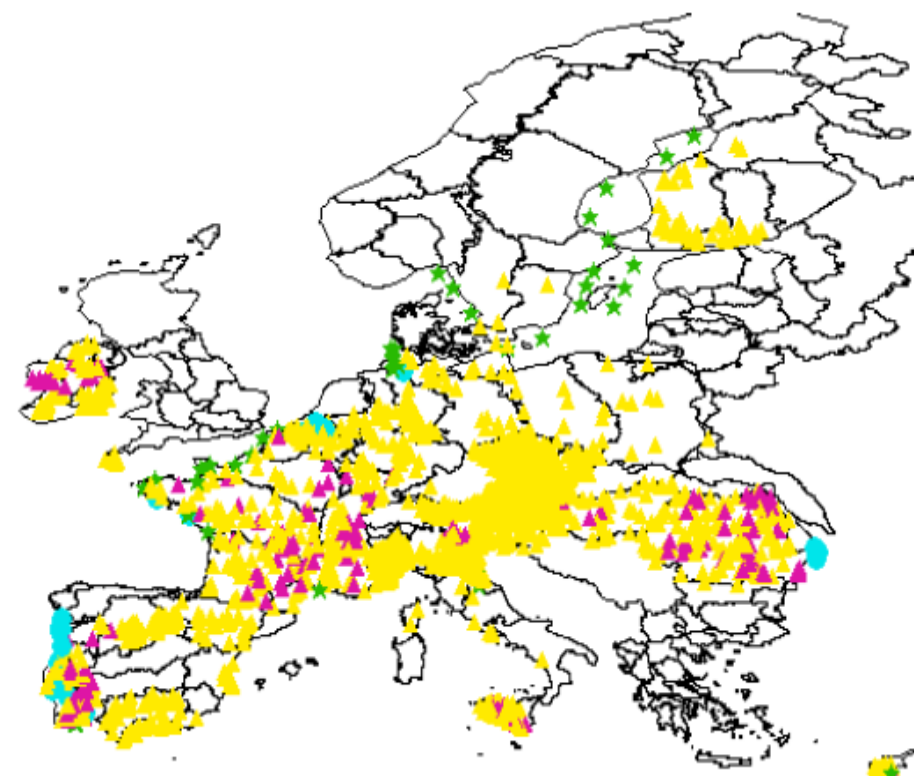
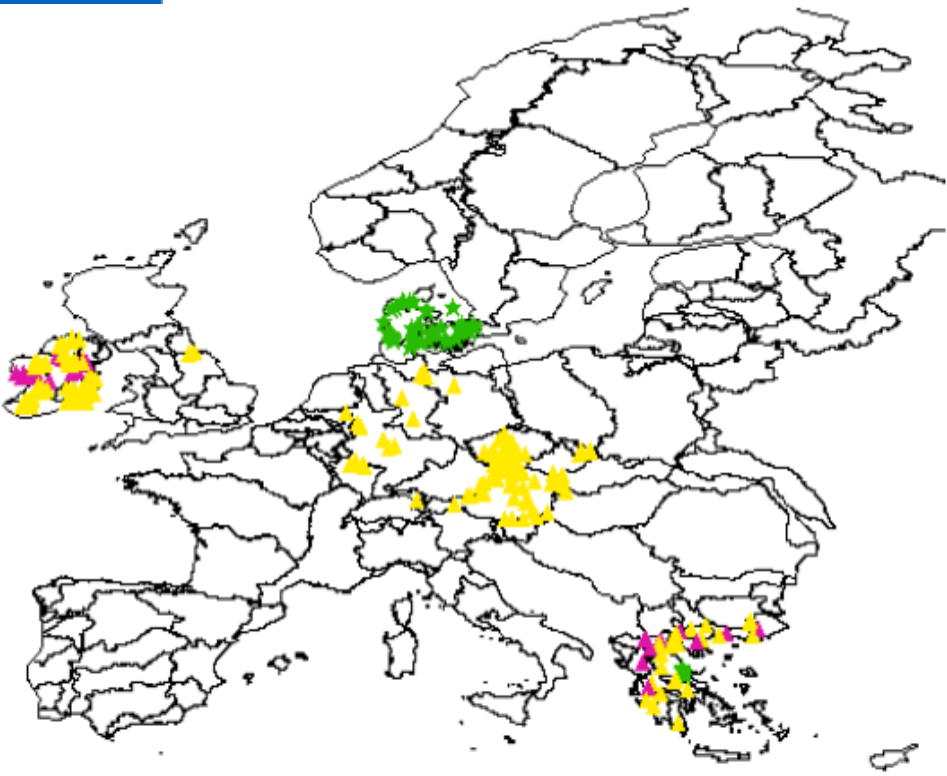
B.FRIBOURG-BLANC, IOW  
([b.fribourg-blanc@oieau.fr](mailto:b.fribourg-blanc@oieau.fr))



# 1. Availability (location of monitoring stations)

-2,2',4,4',6-Pentabromodiphenyl ether (CAS n°189084-64-8)

Alachlor (CAS n°15972-60-8)



Water body type of station

- ▲ River
- ▲ Lake
- Transitional
- ★ Coastal



# 3. Metadata

-Analytical method reported

Method	number of analyses
internal	3 311 741
EN norm	48 256
ISO norm	93 031
ISO EN norm	337 529
EPA norm	71 997
<b>Analytical methods provided</b>	<b>3 862 554</b>
<b>no information</b>	<b>10 740 319</b>

<b>% normalised</b>	3,8%
<b>% not normalised</b>	22,7%
<b>% with no information</b>	73,5%

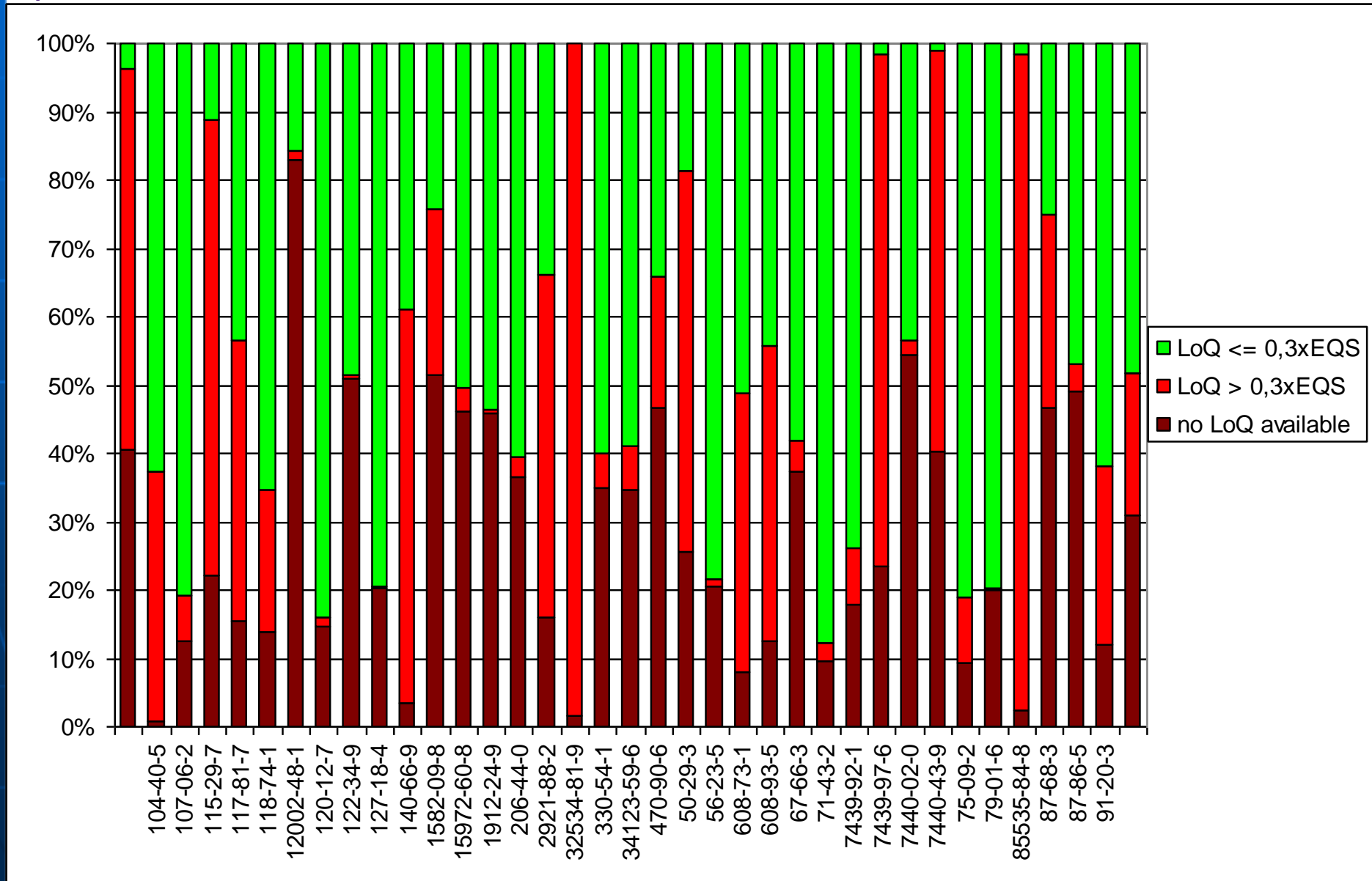
- Quality information reported

Usual field name	% of analyses
<b>Data controlled by a competent authority</b>	12,9%
<b>Is accredited for this substance</b>	4,3%
<b>field blank checked</b>	0,7%
<b>Extraction recovery</b>	0,9%
<b>Correction extraction recovery</b>	0,0%
<b>Control charts</b>	0,7%
<b>Frequency of control</b>	0,9%
<b>Participation in inter-laboratory studies</b>	0,4%
<b>Laboratory performance</b>	0,5%
<b>EEA data quality index</b>	0,0%
<b>DataScreening</b>	0,0%



# 4. Limits of quantification: Directive 2008/105/EC

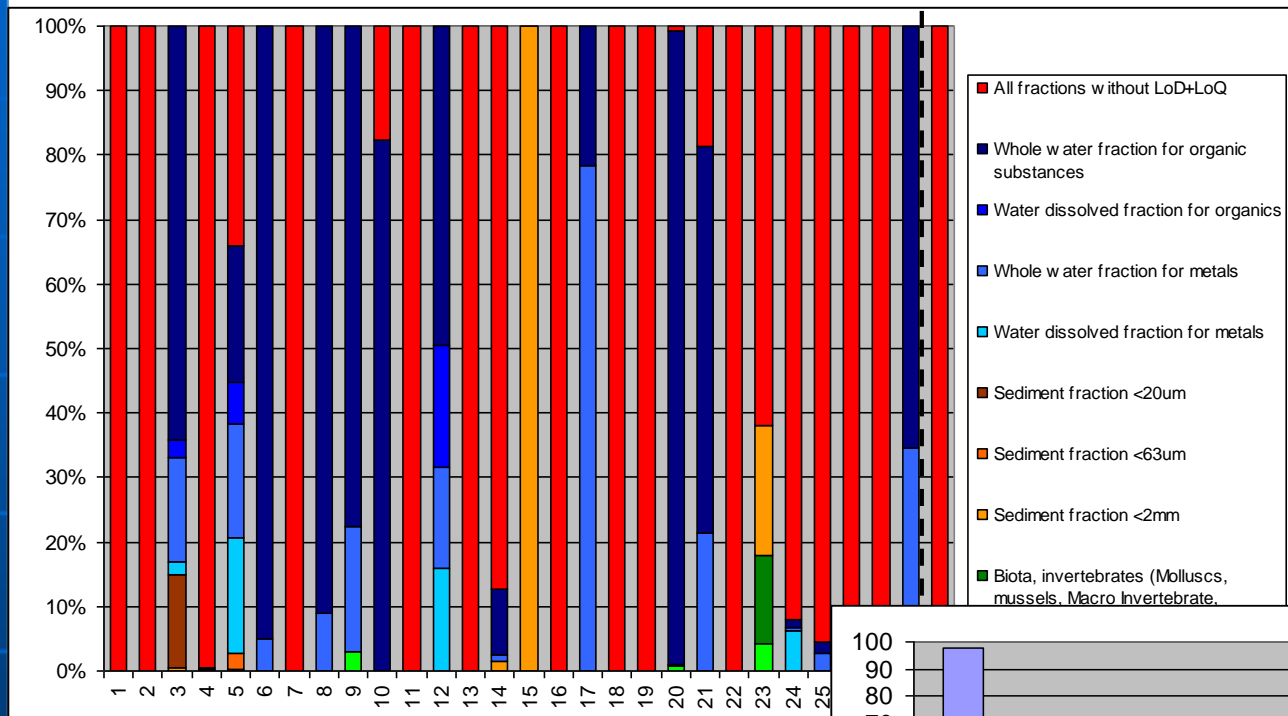
-performance criteria set in Directive 2009/90/EC:  $LoQ < 0,3 \times EQS$



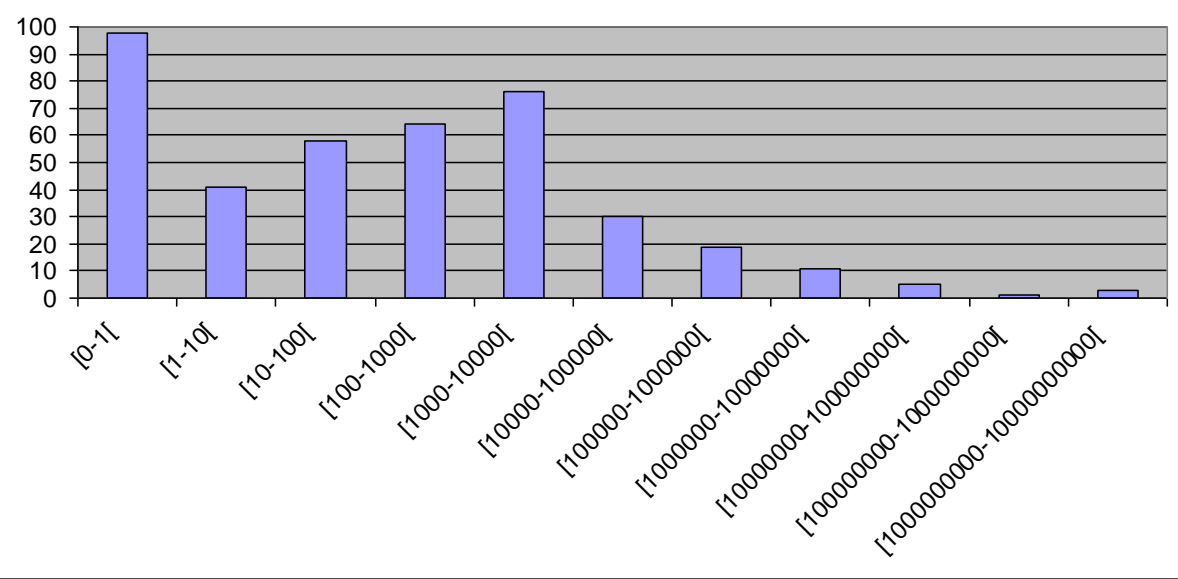


# 4. Limits of quantification

-Proportion of data with LoD and LoQ by country



-LoQ ranges  
(number of couples substance-fraction in the range)



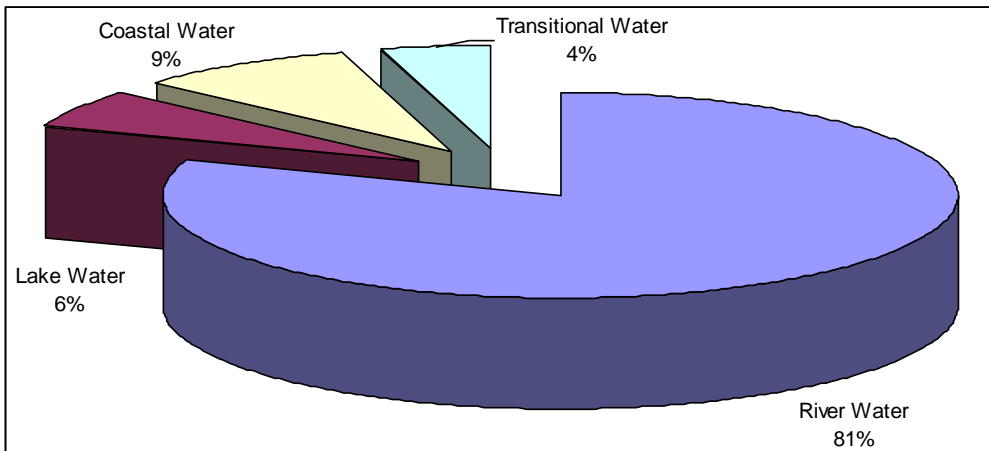


# 5. Spatial coverage

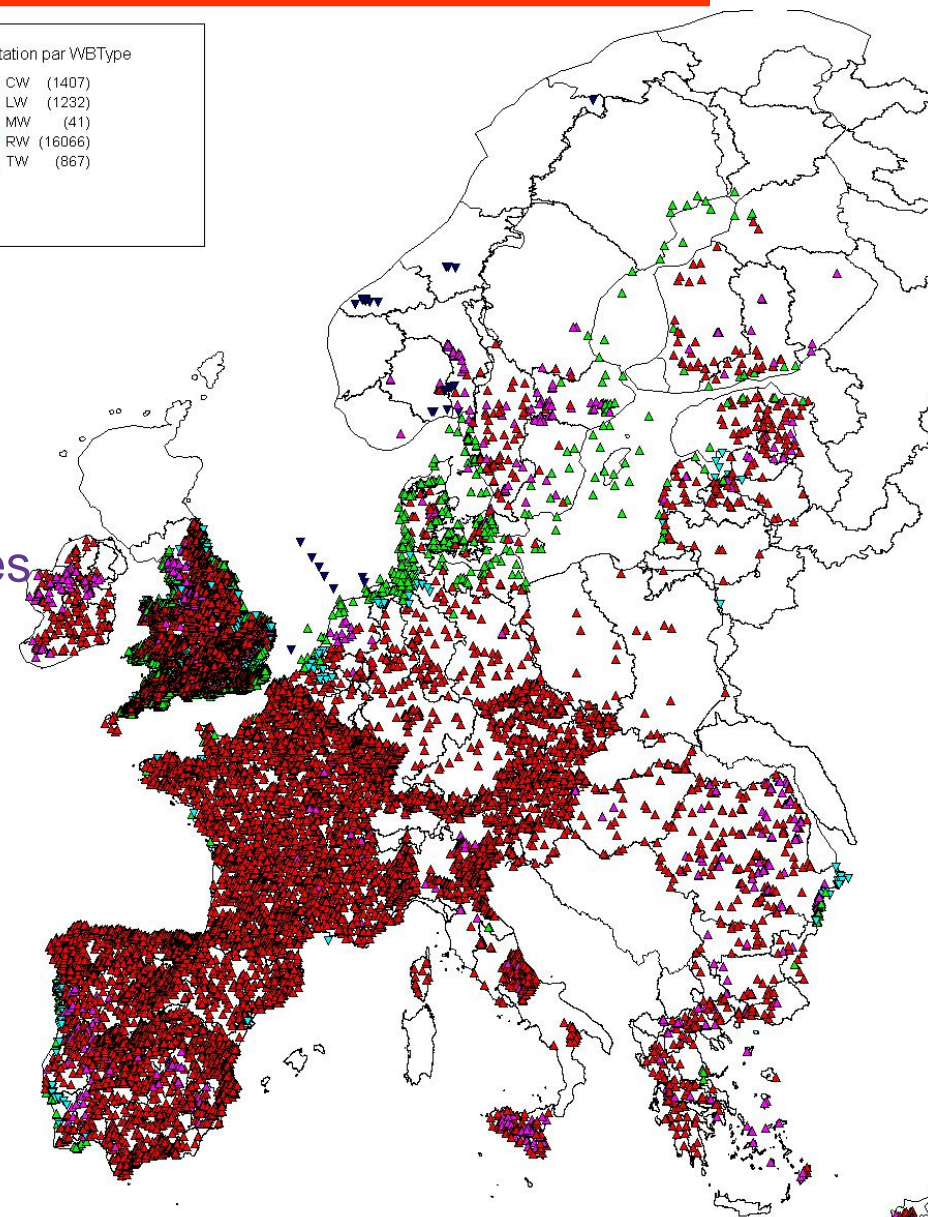
- 14.5 million analyses on 1151 substances
  - 4 Water categories
  - 20 000 stations
  - 28 countries

- Uneven geographical distribution

- Uneven number of stations by water categories



station par WBType	
▲ CW	(1407)
▲ LW	(1232)
▼ MW	(41)
▲ RW	(16066)
▼ TW	(867)





---

**Thanks for your attention...**